

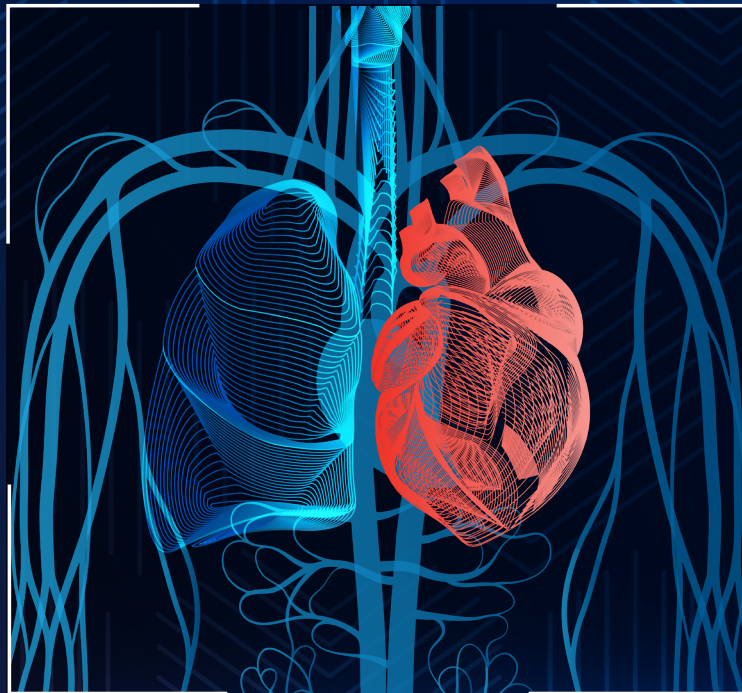
EXHIBITOR PROSPECTUS

HEART | LUNG | VASCULAR

2025 CONFERENCE

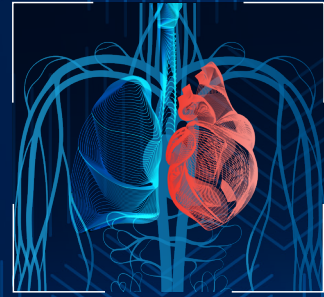
**STRONGEST
T♥GETHER**

Thursday, February 13th & Friday, February 14th
AdventHealth Nicholson Center, Celebration, FL




AdventHealth

STRONGEST T♥GETHER



COURSE OVERVIEW

The Heart, Lung & Vascular Institute invites you to our second annual meeting of the minds exploring all aspects of cardiovascular healthcare at AdventHealth.

This event will offer didactic lectures and roundtable discussions with leading industry physicians and administrators in the AdventHealth system and beyond.

Attendees will explore topics in building comprehensive, multidisciplinary patient-centered care across modalities. The goal is to create a national community of expertise where we can share learnings and ongoing efforts to help us maximize quality, profitability and connectivity amongst all AdventHealth facilities.

Credits Available

This event will offer 6 CME & CEU credits to qualifying attendees. Additional details will be announced on the registration site soon.

Hotel Information



Melia Orlando

- Located diagonally across the street from the AdventHealth Celebration campus, the Nicholson Center and a variety of quick-service restaurants are all within a 10-minute walk.
- Photos can be viewed at [Melia.com](https://www.melia.com).
- Room types range from studios to two-bedroom apartment style suites with full kitchens.

For more information, please email
Sarah.Blair@adventhealth.com

COURSE AGENDA | FEBRUARY 13th & 14th

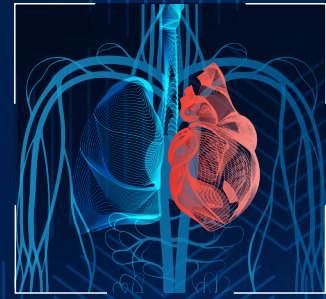
Thursday, February 13th

Duration	Agenda
12:45 PM - 1:30 PM	Registration & Snacks
1:30 PM - 5:00 PM	Vendor Fair & Networking

Friday, February 14th

Duration	Agenda
8:00 AM - 9:40 AM	Presentations
9:40 AM - 9:55 AM	Vendor Fair & Break
9:55 AM - 10:55 AM	Presentations
10:55 AM - 11:10 AM	Vendor Fair & Break
11:10 AM - 12:10 PM	Presentations
12:10 PM - 1:10 PM	Vendor Fair & Lunch
1:10 PM - 2:45 PM	Presentations
2:45 PM - 3:00 PM	Vendor Fair & Break
3:00 PM - 5:00 PM	Presentations

STRONGEST T♥GETHER



SPONSORSHIP LEVELS

DIAMOND SPONSOR: \$25,000 (Limited to 1 company)

- Private dinner with VIP attendees Thursday evening
- Opportunity to interact with key executives, Medical Directors, and physician leaders
- Booth inside general session on Thursday & outside of general session on Friday
- Course attendance for (4) company representatives
- Company logo on event signage and acknowledgment on the event website
- Ads to be placed in attendee folders

PLATINUM SPONSOR: \$20,000 (3 AVAILABLE)

- Booth inside general session on Thursday & outside of general session on Friday
- Opportunity to interact with executives, Medical Directors, physicians, and clinicians
- Course attendance for (3) company representatives
- Company logo on event signage and acknowledgment on the event website
- Ads to be placed in attendee folders

GOLD LEVEL: \$10,000 (5 AVAILABLE)

- Booth in general session on Thursday & outside of general session on Friday
- Opportunity to interact with executives, Medical Directors, physicians, and clinicians
- Course attendance for (2) company representatives
- Company logo on event signage and acknowledgment on the event website

SILVER LEVEL: \$5,000 (5 AVAILABLE)

- Booth in general session on Thursday & outside of general session on Friday
- Course attendance for (1) company representative
- Company logo on event signage and acknowledgment on the event website
- Opportunity to interact with executives, Medical Directors, physicians, and clinicians

ADDITIONAL WAYS TO SUPPORT:

- Barista
- Catering
- Swag

Please email Sarah.Blair@adventhealth.com with inquiries